

# 115Kv Electric Transmission Line

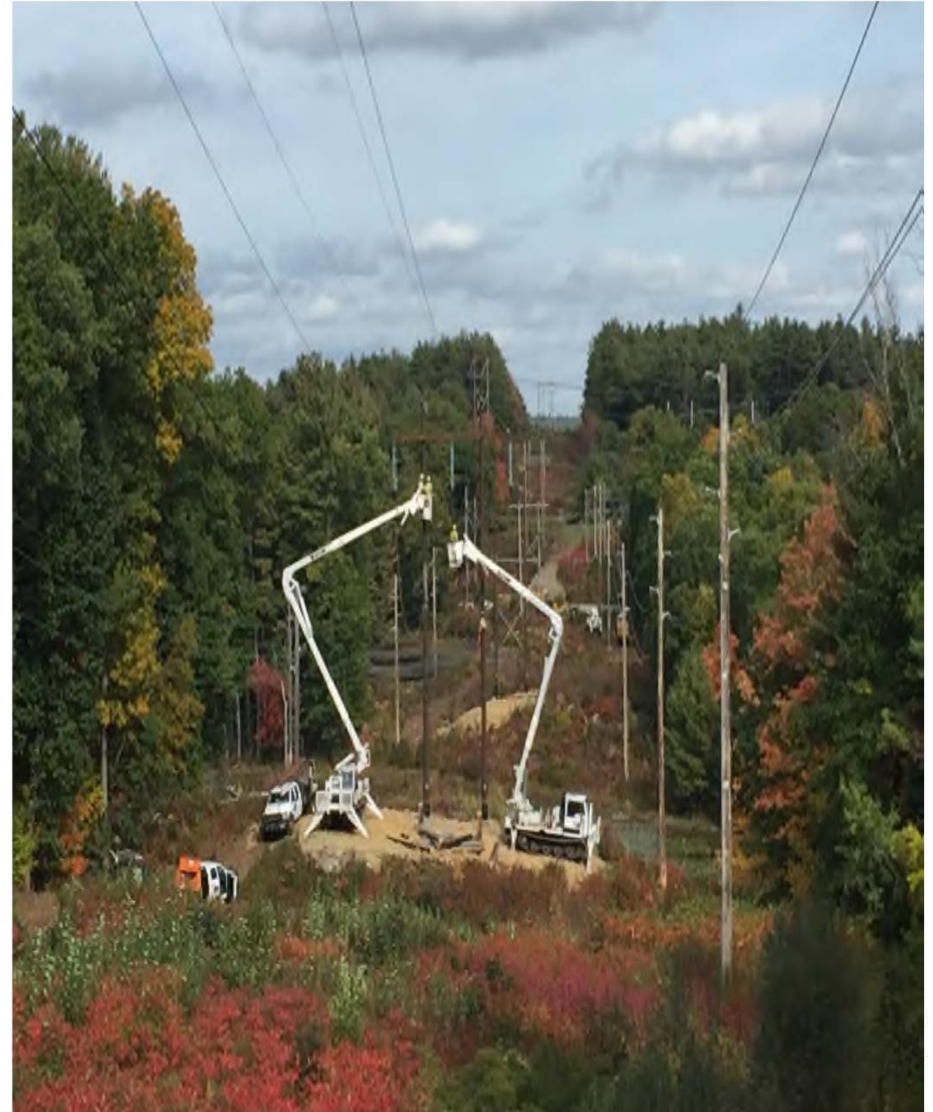
Joshua Scott

MS in Project Management

Fall 2016

# Project Overview

- Intro
- Customers
  - Commercial/ Residential
- Public Consensus
  - Door Knockers/Mailings
  - Existing Const. in ROW
- Risks-
  - Safety discussion thru tailboards
  - Hurricane Matthew
- Contractors



# Project Overview

- Environmental
  - Permits/BMP's
  - Consultant Oversight
- Contractors
  - Primary/Sub-Contractors
  - Construction
- Utility Oversight
  - PM/Safety/Const. Rep
- Lessons Learned
  - Theft of trailers
  - Use of on site security
- Closing

